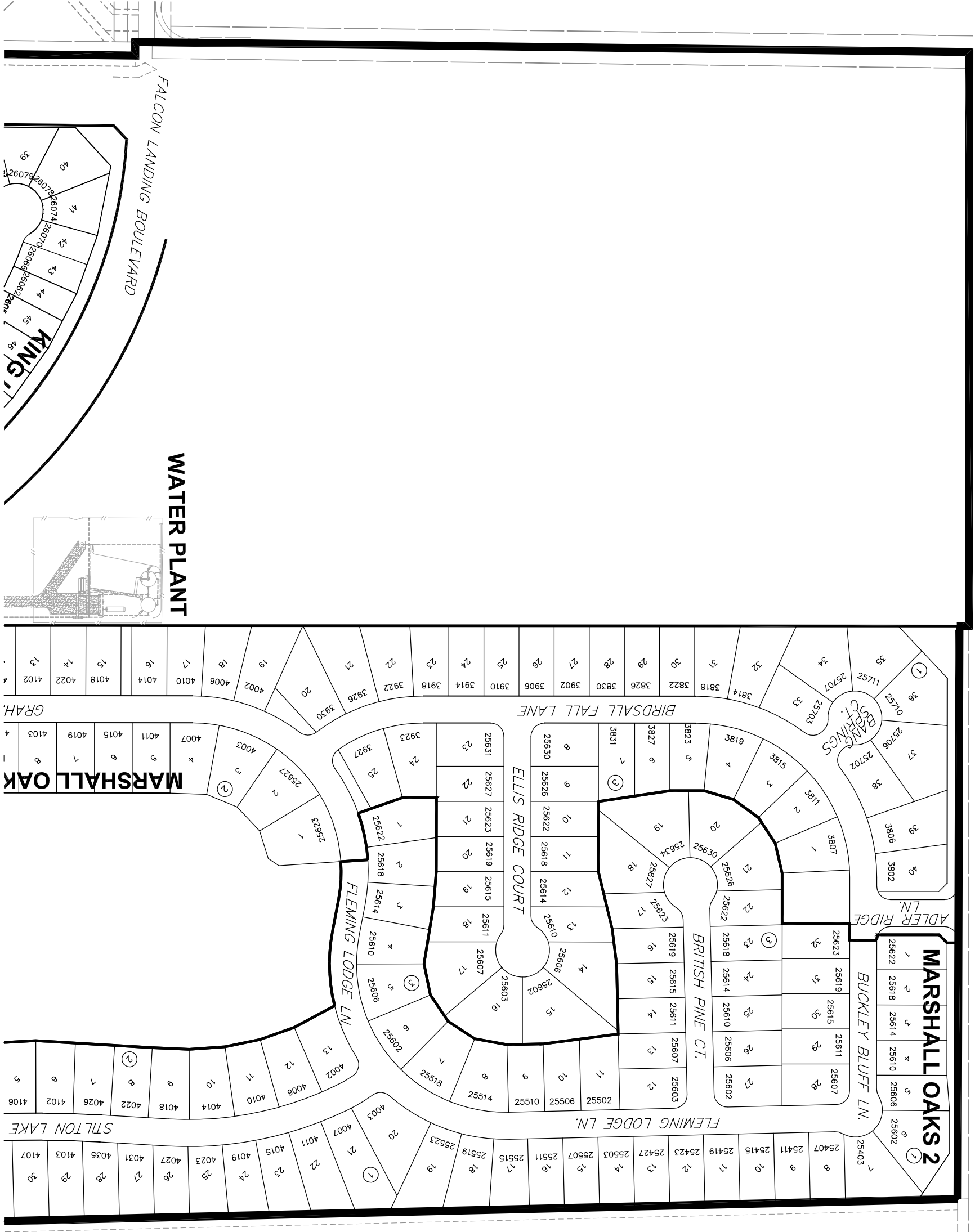


**BCE**  
 Brown & Gay Engineers, Inc.  
 10777 Westheimer, Suite 400, Houston, TX 77042  
 Tel: 281-555-0700 • www.browngay.com  
 TBPE Registration No. F-1046

**FORT BEND COUNTY  
 MUD 185  
 OVERALL**

Scale:	Job No.:	Date:	Sheet:
1"=200'	18560-00	8/2015	1 of 6



GREENBUSCH ROAD

**MARSHALL OAKS 2**

BUCKLEBY BLUFF LN.

ADLER RIDGE LN.

BIRDSELL FALL LANE

BRITISH PINE CT.

ELLIS RIDGE COURT

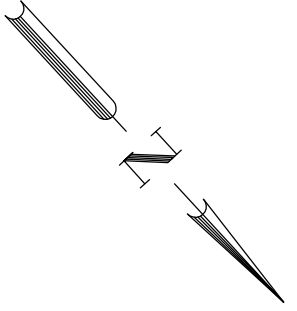
FLEMING LODGE LN.

STILTON LAKE

**WATER PLANT**

FALCON LANDING BOULEVARD

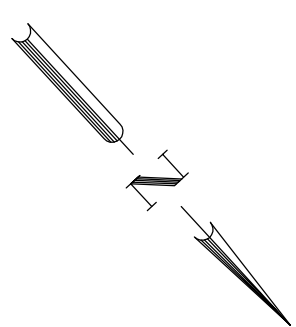
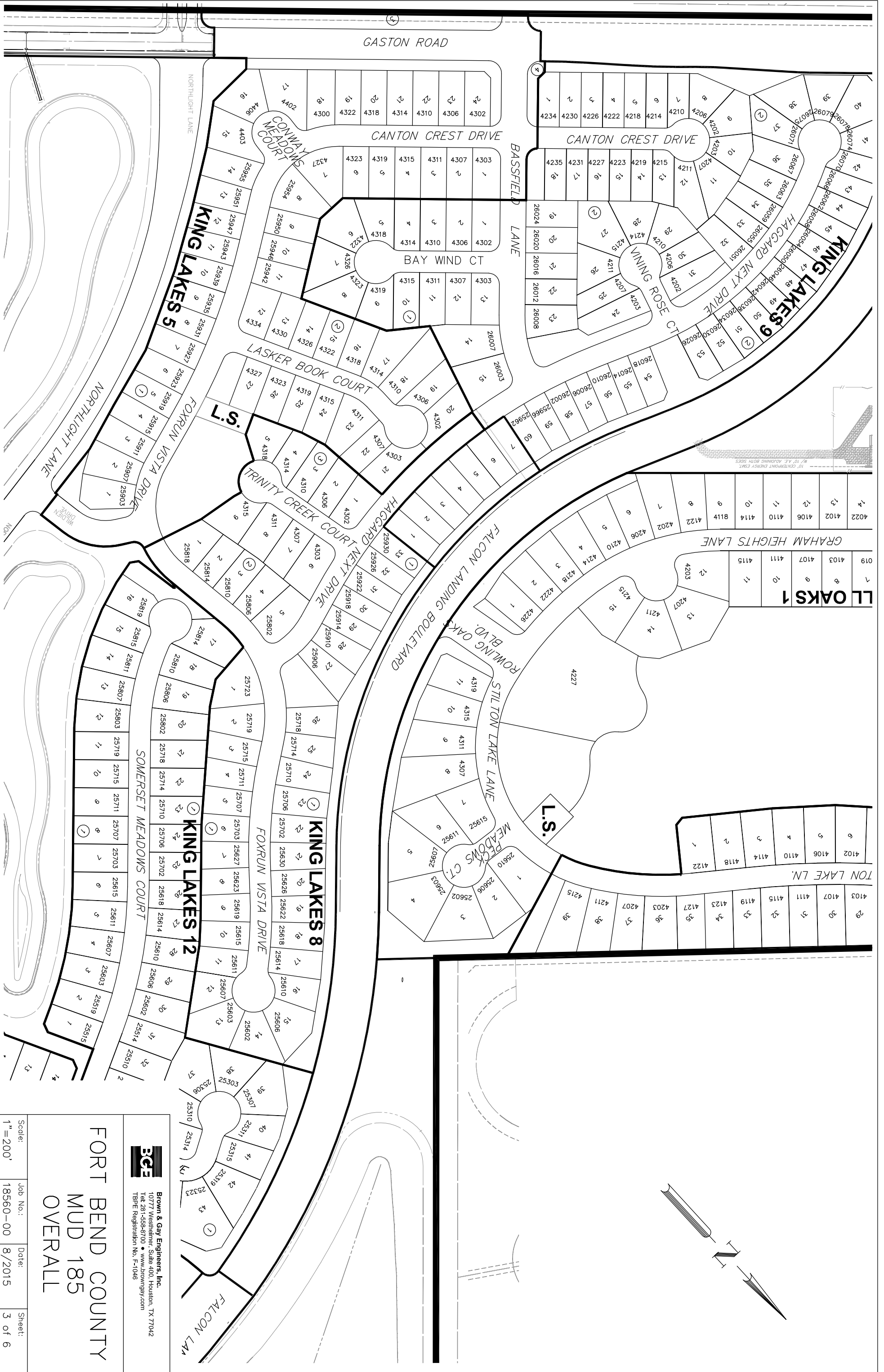
**KING ST.**



**Brown & Gay Engineers, Inc.**  
 10777 Westheimer, Suite 400, Houston, TX 77042  
 Tel: 281-558-0700 • www.browngay.com  
 TBPE Registration No. F-1046

**FORT BEND COUNTY**  
**MUD 185**  
**OVERALL**

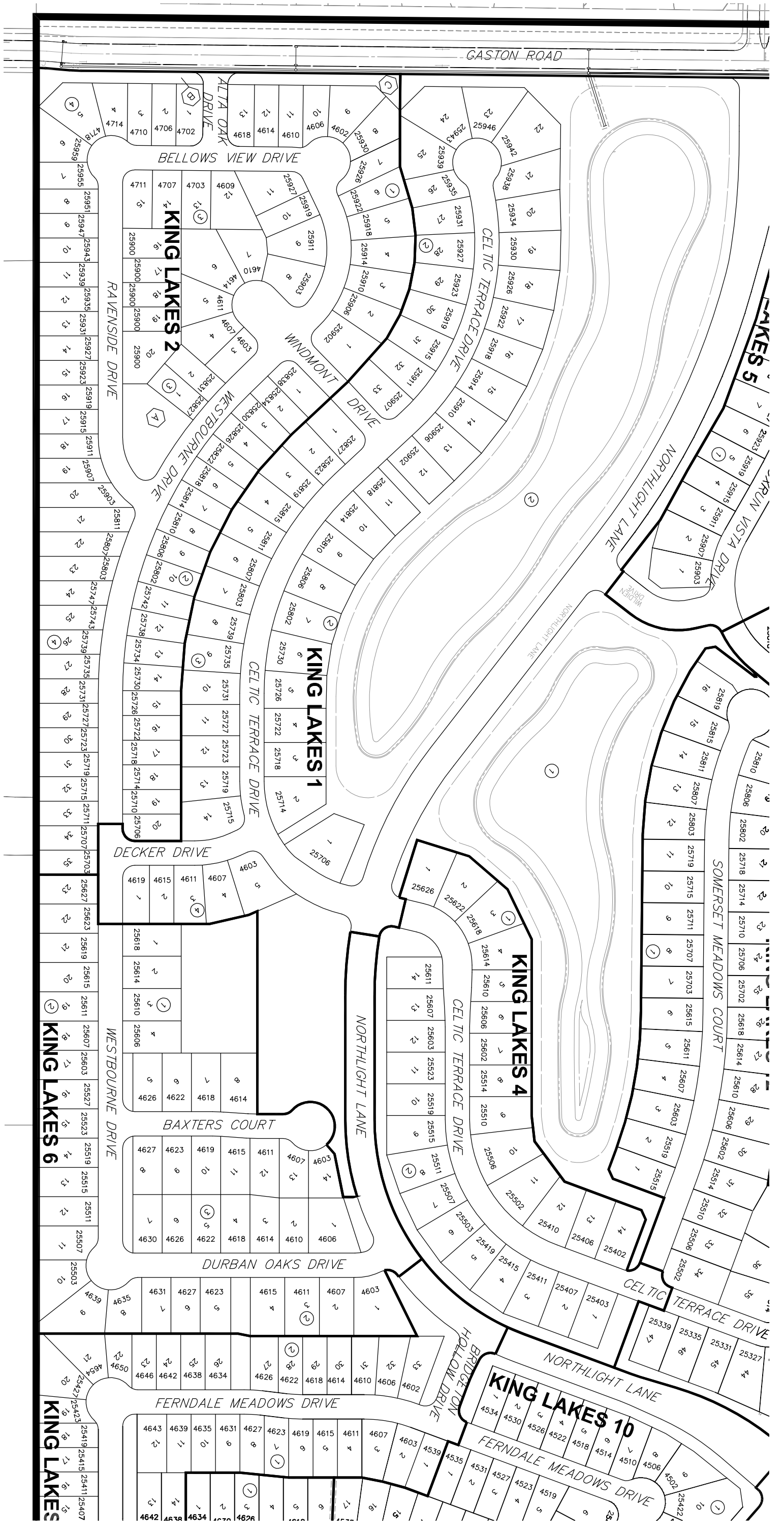
Scale:	Job No.:	Date:	Sheet:
1"=200'	18560-00	8/2015	2 of 6



**BCE**  
 Brown & Gay Engineers, Inc.  
 10777 Westheimer, Suite 400, Houston, TX 77042  
 Tel: 281-558-0700 • www.browngay.com  
 TBE Registration No. F-1046

**FORT BEND COUNTY  
 MUD 185  
 OVERALL**

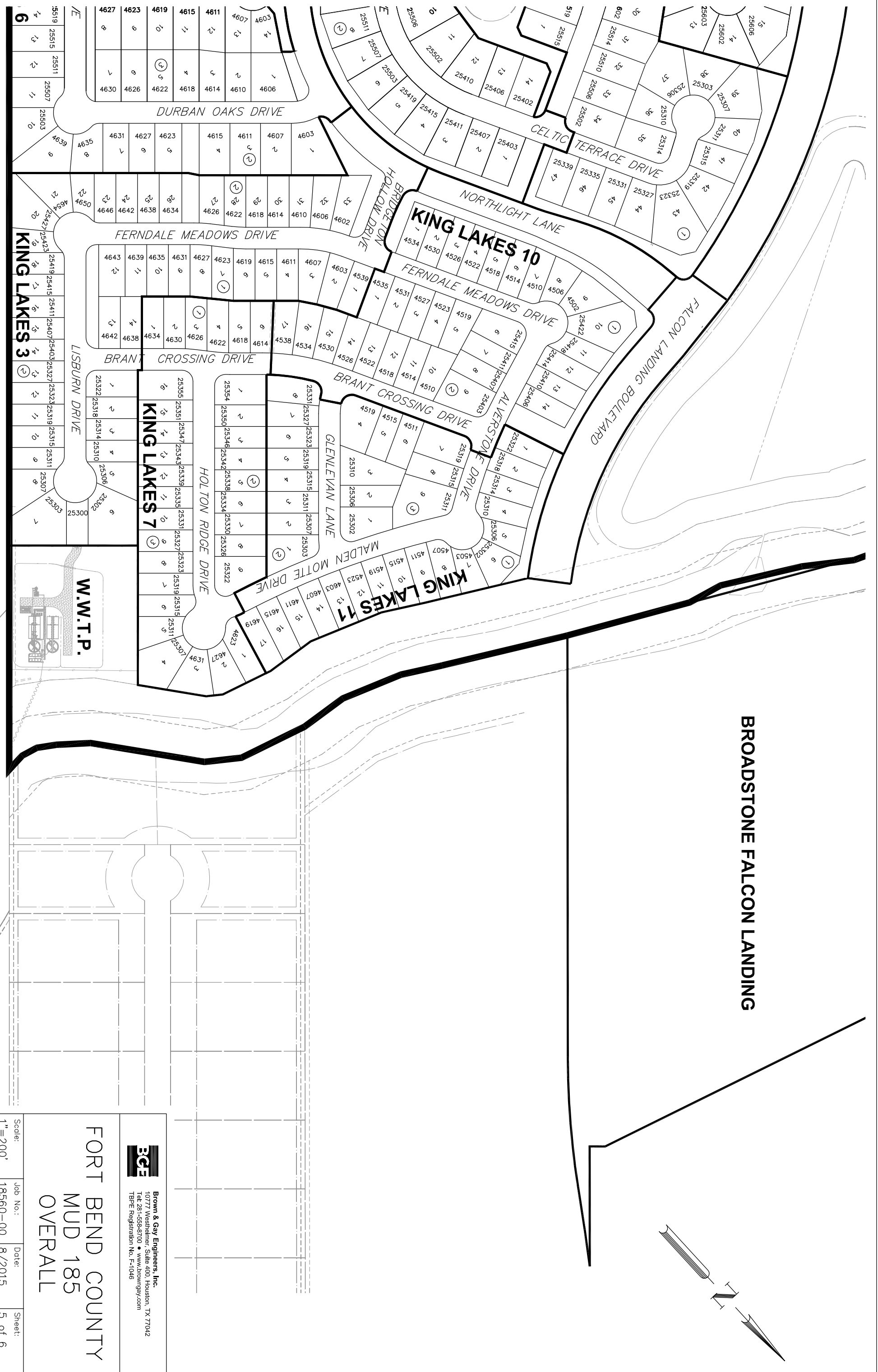
Scale: 1"=200'  
 Job No.: 18560-00  
 Date: 8/2015  
 Sheet: 3 of 6



**BGE**  
 Brown & Gay Engineers, Inc.  
 10777 Westheimer, Suite 400, Houston, TX 77042  
 Tel: 281-555-8700 • www.browngay.com  
 TBP# Registration No. F-1046

**FORT BEND COUNTY  
 MUD 185  
 OVERALL**

Scale:	Job No.:	Date:	Sheet:
1"=200'	18560-00	8/2015	4 of 6

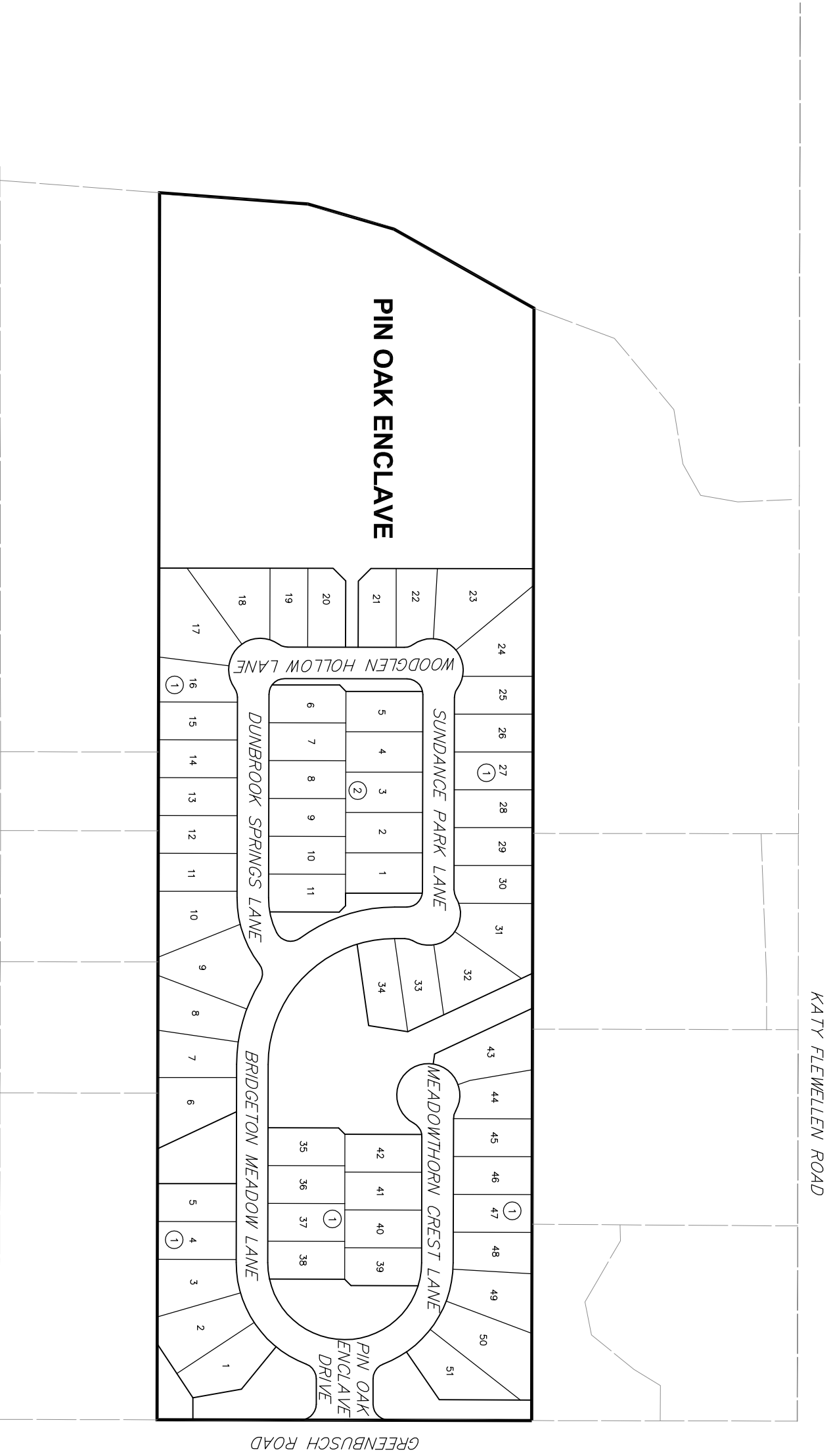


**BROADSTONE FALCON LANDING**

**BCE**  
 Brown & Gay Engineers, Inc.  
 10777 Westheimer, Suite 400, Houston, TX 77042  
 Tel: 281-555-0700 • www.browngay.com  
 TBE Registration No. F-1046

**FORT BEND COUNTY  
 MUD 185  
 OVERALL**

Scale: 1" = 200'  
 Job No.: 18560-00  
 Date: 8/2015  
 Sheet: 5 of 6



**FORT BEND COUNTY**  
**MUD 185**  
**OVERALL**

**BGE**  
 Brown & Gay Engineers, Inc.  
 10777 Westheimer, Suite 400, Houston, TX 77042  
 Tel: 281-558-0700 • www.browngay.com  
 TBE Registration No. F-1046

Scale:	Job No.:	Date:	Sheet:
1"=200'	18560-00	8/2015	6 of 6